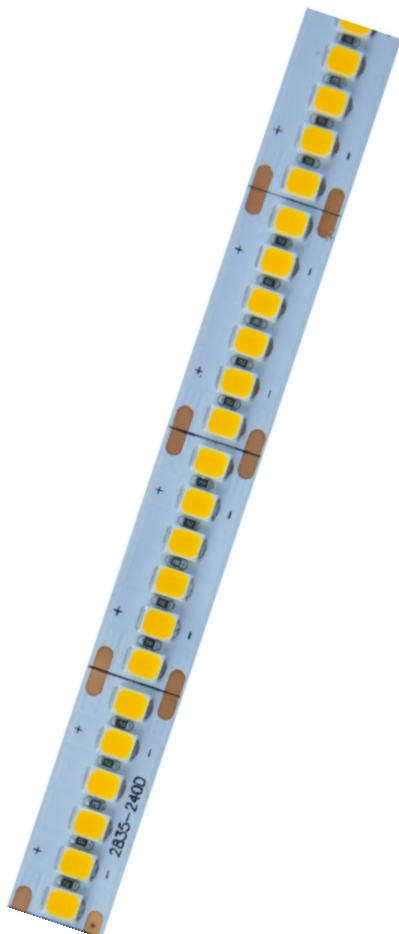


# LED Flexible Strip 3528 Series

LM2835-WN240-24V-10mm



## Product Feature

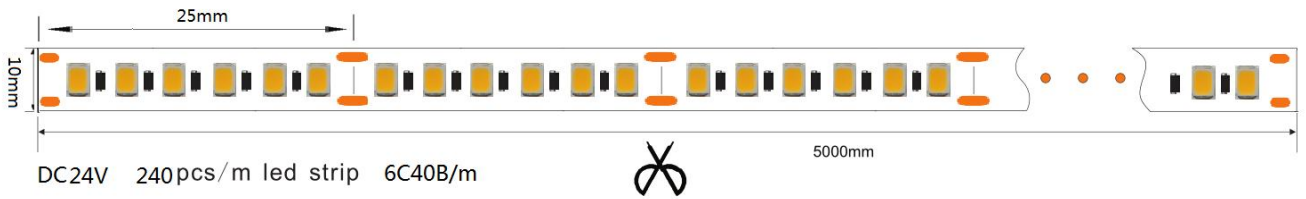
- ◆ **240**leds per meter,5meters per roll, the theoretical power **24W**/meter, Actual power: W/m ,light angle 120 degrees. **27-30**lm per led chip.Can be customized according to needed.
- ◆ Flexible, cuttable,back with 3M double-sided adhesive,can be installed in the concave convex surface, easy to install.
- ◆ Led strip supports external light regulator type: 0/1-10V PWM Dali Dimmable inductive switch controller.
- ◆ Cutting unit is **25**mm, **6** led chips can be used as a unit, cutting does not affect other parts. Normal length is 5 meters, other lengths also acceptable.
- ◆ Low power consumption, low fever, no glare, impact resistance, energy saving and environmental conservation.
- ◆ LED can be customized to glue dust (IP65), (IP66), silicone casing plus glue waterproof (IP68);
- ◆ Life time: Mean time between failure(MTBF):50-100K hour

CE RoHS FC

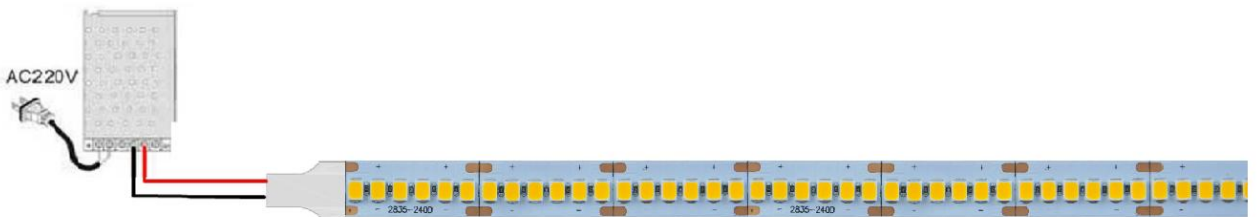
## Technical Parameters

| Mode             | LED Q'ty/M | Color temperature |            | CRI(Ra) |     | Voltage (V DC) | Electric current (A/m) | Power± 10%(W/m) |     |     | Lm/m ± 10% | FPC Width |
|------------------|------------|-------------------|------------|---------|-----|----------------|------------------------|-----------------|-----|-----|------------|-----------|
|                  |            |                   |            | Min     | Max |                |                        | Actual          | Min | Max |            |           |
| LM2835-WN240-24V | 240        | White             | 6000-6500K | 80+     | 90+ | 24             |                        |                 | 8   | 24  |            | 10mm      |
|                  |            | Natural Wite      | 4000-4500K |         |     |                |                        |                 |     |     |            |           |
|                  |            | Warm white        | 2200-3200K |         |     |                |                        |                 |     |     |            |           |
|                  |            | Red               | 620-625nm  |         |     |                |                        |                 |     |     |            |           |
|                  |            | Blue              | 455-460nm  |         |     |                |                        |                 |     |     |            |           |
|                  |            | Green             | 520-525nm  |         |     |                |                        |                 |     |     |            |           |
| Yellow           | 590-592nm  |                   |            |         |     |                |                        |                 |     |     |            |           |

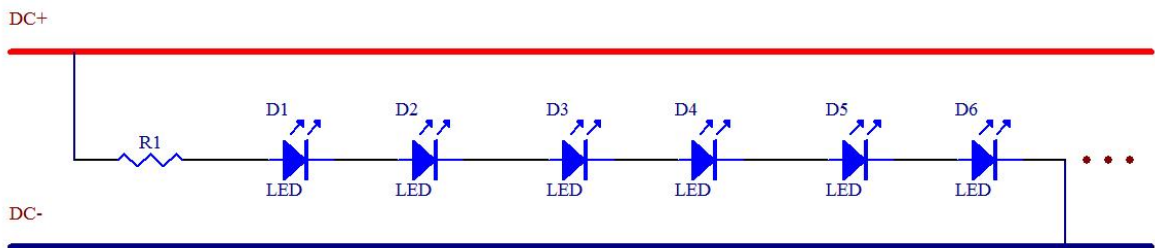
## Dimension(mm/inch)



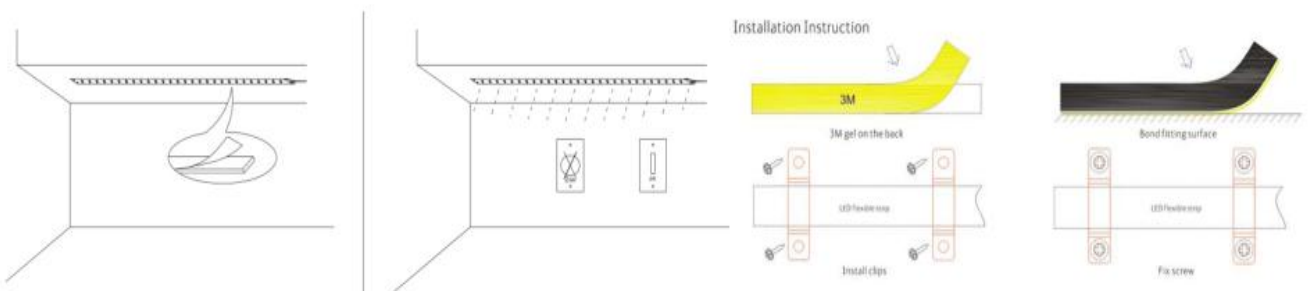
## Product Electrical



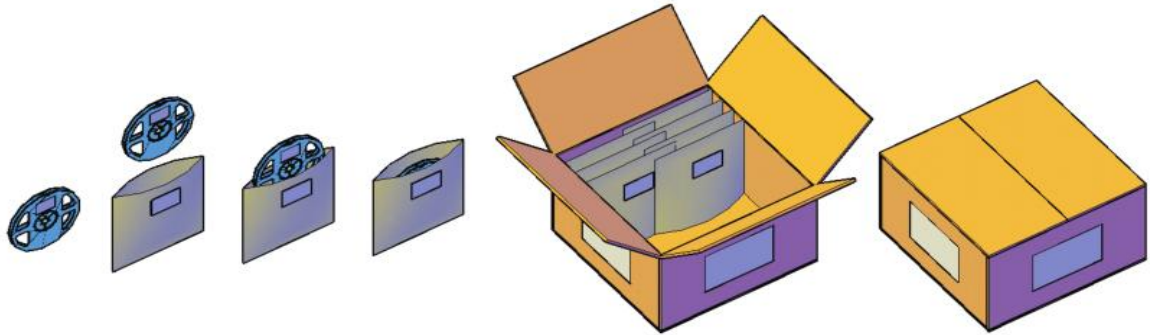
## Linking Operation



## Installation



## Product Packaging



## Safety Information

- The strip itself and all its components may not be mechanically stressed.
- Assembly must not damage or destroy conducting paths on the circuit board.
- Installation of LED ribbon (with power supplies) needs to be made with regard to all applicable electrical and safety standards. Only qualified personnel should be allowed to perform installations.
- Correct electrical polarity needs to be observed. Wrong polarity may destroy the strip.
- Parallel connection is highly recommended as safe electrical operation mode.
- Serial connection is not recommended. Unbalanced voltage drop can cause hazardous overload and damage the strip.
- Please ensure that the power supply is of adapters power to operate the total load.
- When mounting on metallic or otherwise conductive surfaces, there needs to be an electrical isolation points between strip and the mounting surface.
- Pay attention to standard ESD precautions when installing the strip.
- Damaged by corrosion will not be honored as a materials defect claim. It is the user's responsibility to provide suitable protection against corrosive agents such as moisture and condensation and other harmful elements.